

科技之眼

The Eye of
Science -



臺灣文物時空遊記

Time Travel through Taiwanese Cultural Artifacts

____ Grade ____ Class ____ Number

Student _____

Science Knowledge Reflection Record

Hi Explorer, did you successfully complete today's mission?
Please write or draw your reflections to record your
wonderful memories.

Flip the page and start the mission!

Explorer, we've been waiting for you!
The Artifact Restoration Team has a special mission for you. Please try and search for the answers in the exhibition to help them restore the national treasures.



Craftsmanship of Earth and Fire

- 1 Who is depicted on the pillars of the temple carrying the temple corners? Please circle the correct answer.



Three Immortals of Prosperity, Status, and Longevity



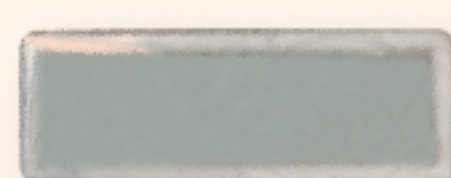
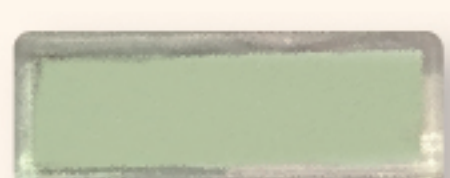
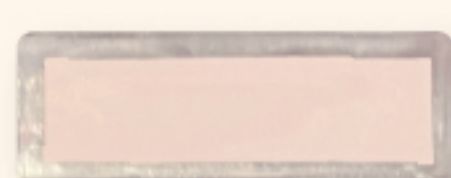
Tribute from the exotic foreigners



Han Fan

Craftsmanship of Earth and Fire

- 2 The glaze colors of Koji ceramics are very rich. Do you know the names of these colors? Please match them.



Bright Yellow
福祿壽三仙

Vermilion Red
胭脂紅

Aged Yellow
古黃

Jade Green
翡翠綠

Sapphire Blue
寶藍

Recreating Past Splendor

- 3 Artifacts can also "get sick." Do you know what factors can cause these symptoms? Please match them.



Square-shaped adhesive stains near the chest



Partial glaze weathering, exposing the body



"Moss" covering the surface of the "Eight Immortals" artwork

Environmental factors

Human-made factors

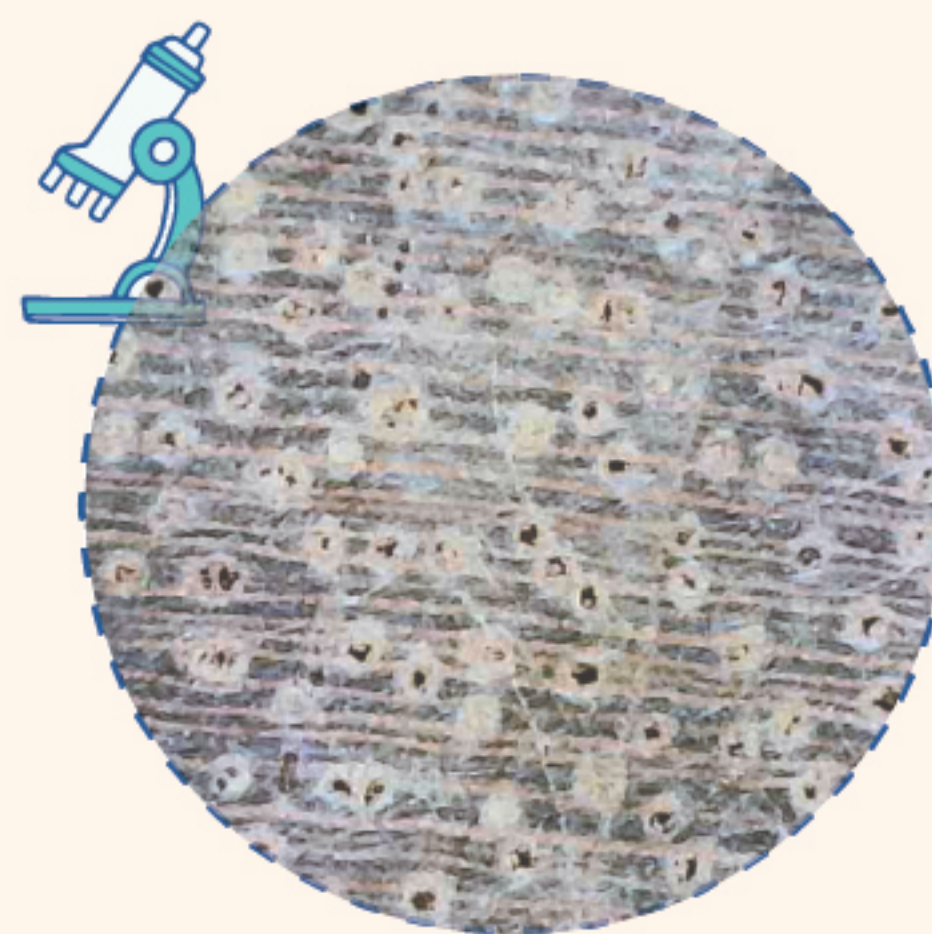
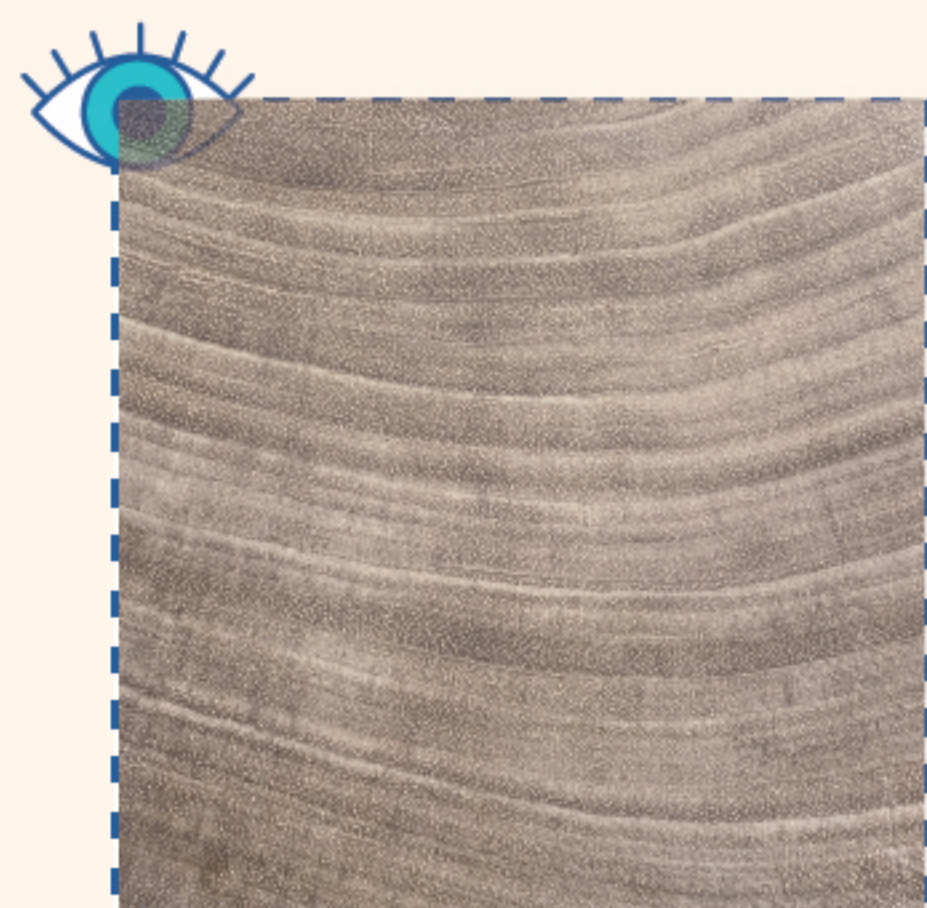
Biological factors

Urgent mission! The Science Analysis Team needs support! Explorer, please try and find the answers from the various exhibits and help the Science Analysis Team with artifact analysis.



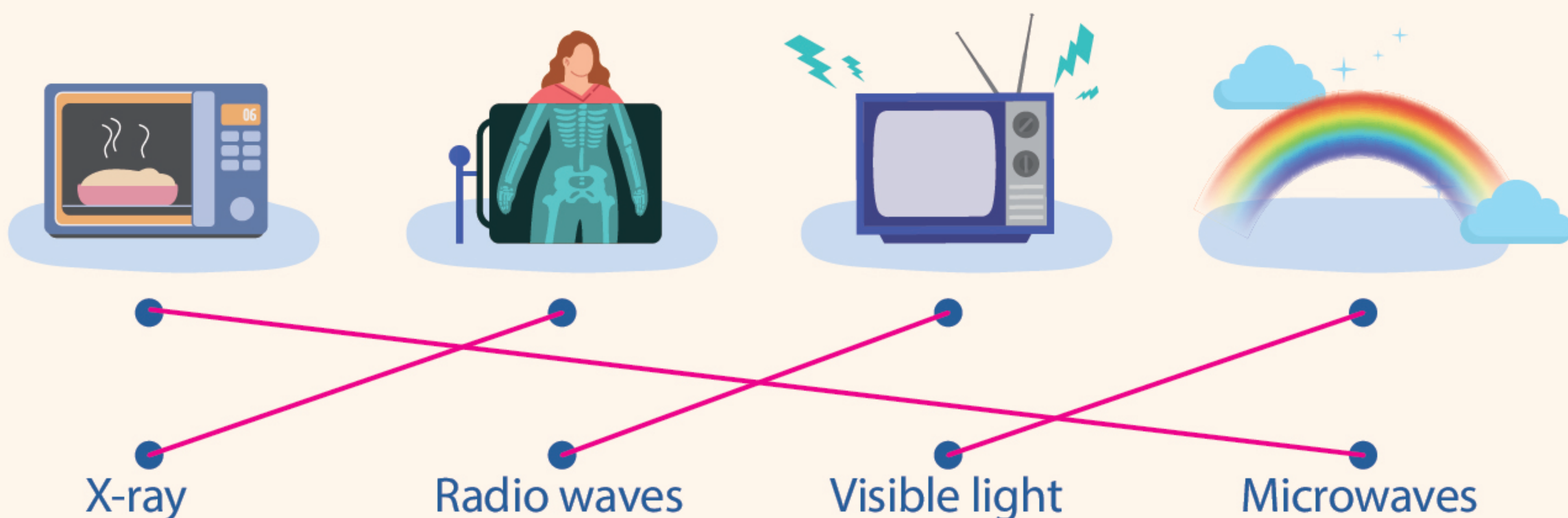
Microscopic World of Artifacts

- 1 What are the differences between the wood grain patterns seen with the naked eye and those seen under a microscope? Please draw them separately.



Mysteries of Visible and Invisible Light

- 2 Which type of electromagnetic wave is associated with these items or natural phenomena? Please match them.



Ultraviolet Light Magic

- 3 When you shine the following objects with ultraviolet light, which item will show fluorescence? Please circle them.



Scorpion specimen



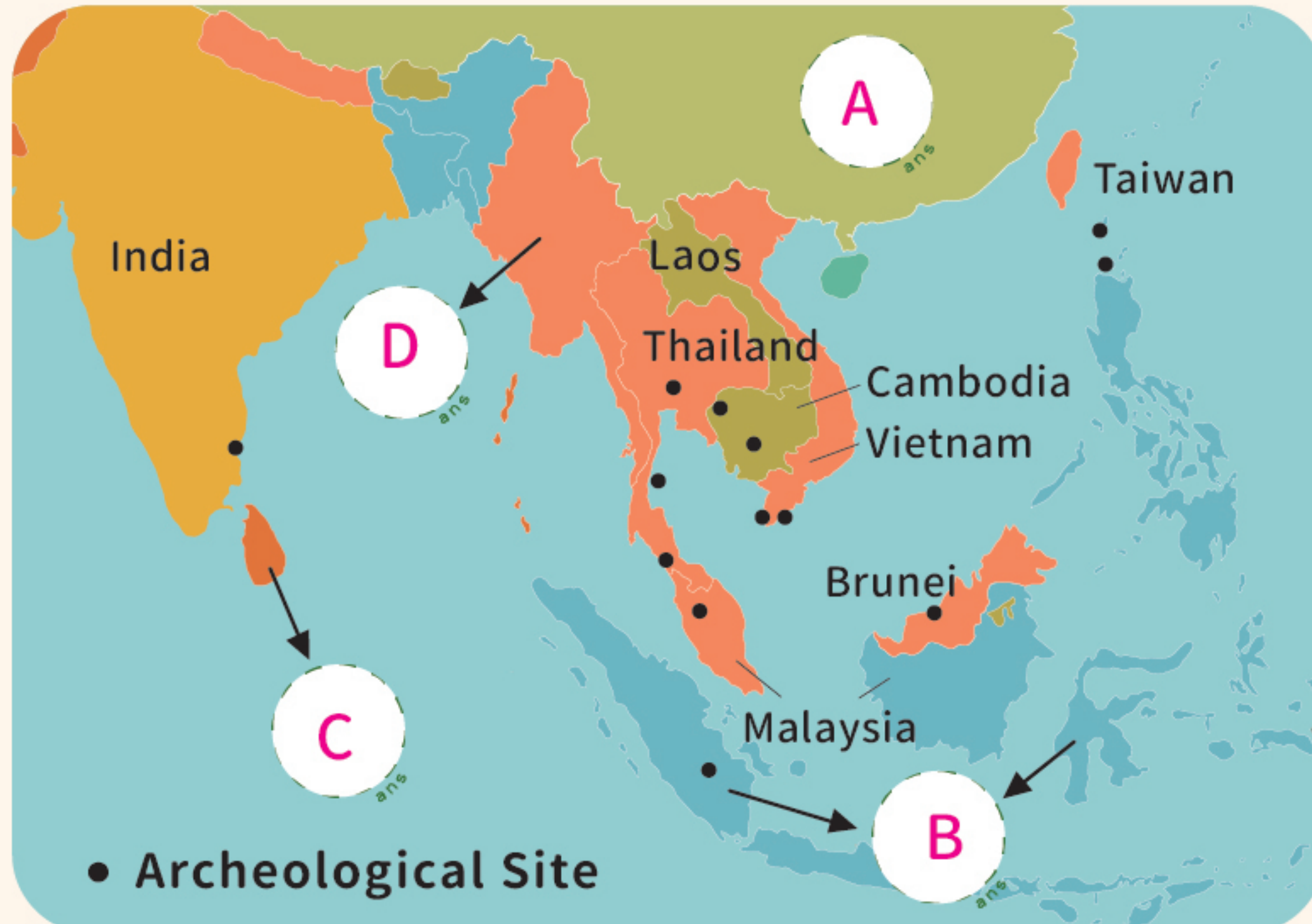
Mineral



Banknote

The Archeology Team excavated pre-historic glass beads dating back over 2000 years. Since there were no written records at the time, please help decipher the secrets hidden in these pre-historic artifacts!

Marvelous Journey of Archeology



1

Archeologists have found that as early as over 2000 years ago, during the Iron Age, Taiwan had close exchanges with many states in "the region around the South China Sea." Please fill in the correct country in the circle.

(A) China

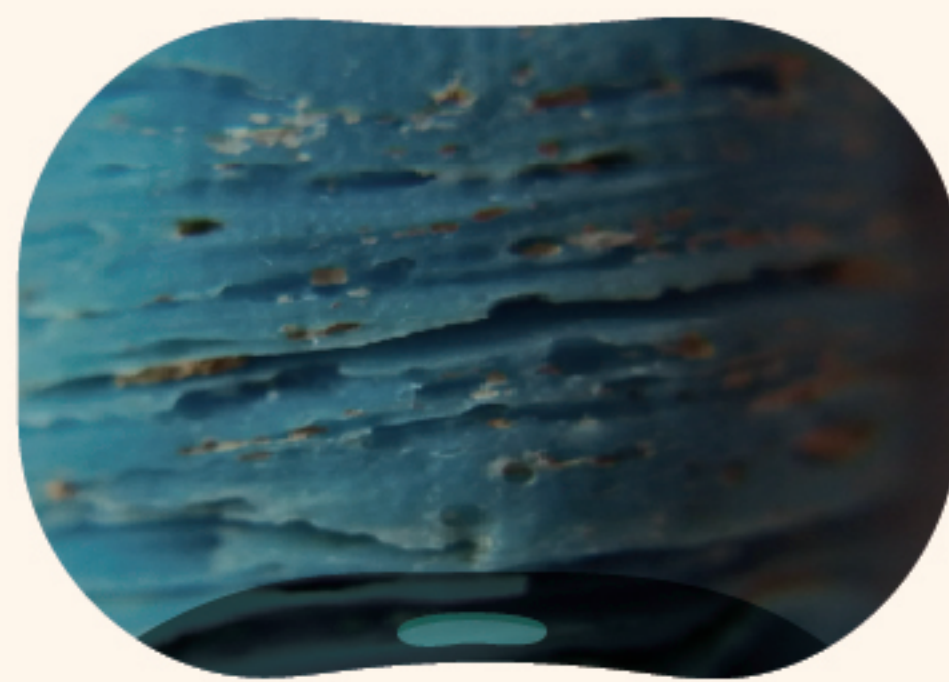
(C) Sri Lanka

(B) Indonesia

(D) Myanmar

From Glass "Columns" to Glass "Beads"

- 2 How were these two glass beads manufactured?
Please select the correct answer.


☐

Winding method

☒

Drawing method

☒

Drawing method

☐

Winding method

Fashionable Artifacts Across Millennia

- 3 Unleash your imagination
and create your own unique
glass bead!

